

STANDEX[®]

Folding Counters

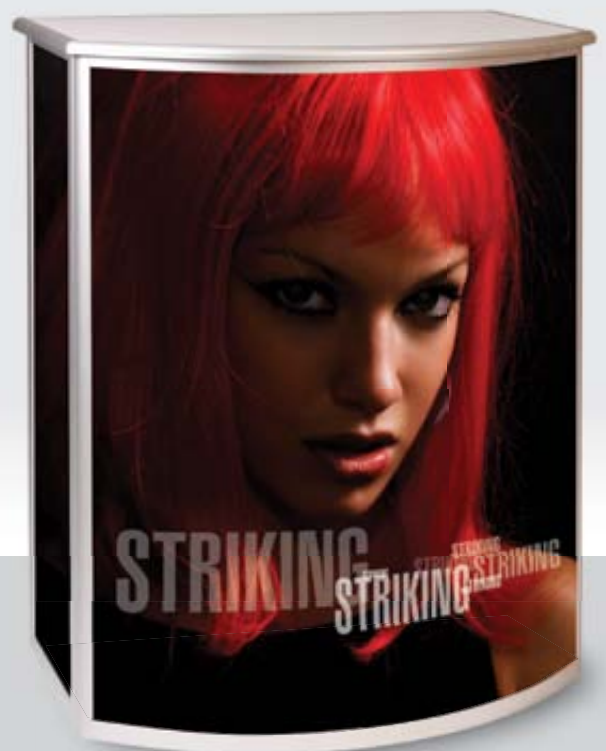
RANGE

3

PC-4-L or H



PC-9-L or H



Sliding Lockable Doors



Transport Case

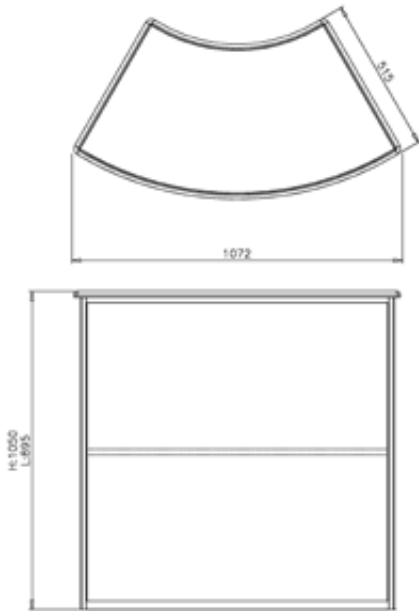


Nylon Bag



Specification

PC-4



PC-4-L

Folding counter, curved 1072 x 515 x 895mm (10kg)

Folded in a carton 1060 x 1060 x 190mm (12kg)

2 + 3mm panel set 2mm: 1 x 1053 x 842mm

3mm: 2 x 432 x 842mm (3kg)

PC-4-H

Folding counter, curved 1072 x 515 x 1050mm (11kg)

Folded in a carton 1060 x 1060 x 190mm (15kg)

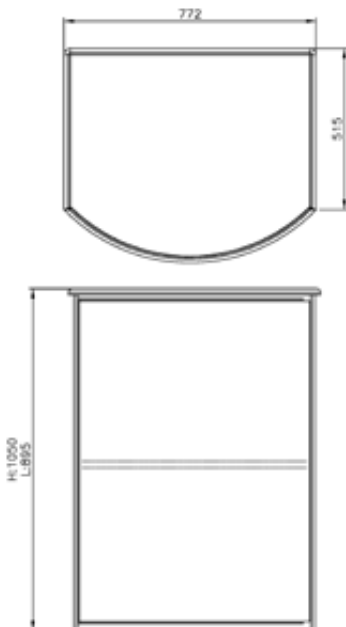
2 + 3mm panel set 2mm: 1 x 1053 x 997mm

3mm: 2 x 432 x 997mm (3kg)

PC-4 Accessories: Nylon bag

Transport Case: 1240 x 1240 x 300mm* (15kg*)

PC-9



PC-9-L

Folding counter, curved front 772 x 658 x 895mm (11kg)

Folded in a carton 1060 x 840 x 230mm (13kg)

3mm panel set 1 x 788 x 842mm + 2 x 397 x 842 (2kg)

Sliding door set in a carton 1100 x 750 x 60 (3kg)

PC-9-H

Folding counter, curved front 772 x 658 x 1050mm (10.5kg)

Folded in a carton 1060 x 840 x 230mm (13kg)

3mm panel set 1 x 778 x 997mm + 2 x 397 x 998 (2kg)

Sliding door set in a carton 1100 x 750 x 60 (3kg)

PC-4 Accessories: Nylon bag

Transport Case: 1240 x 1100 x 290mm* (14kg*)

Bottom Shelf - Base panel (2kg*)

*Approx size and weight