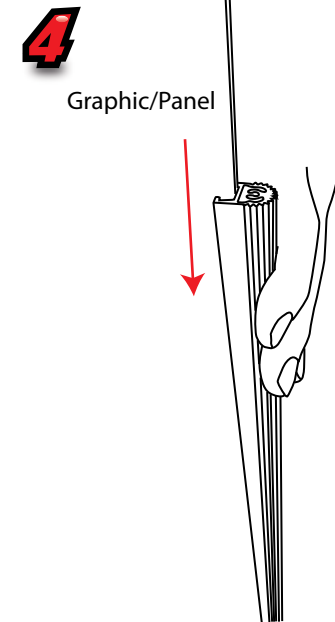
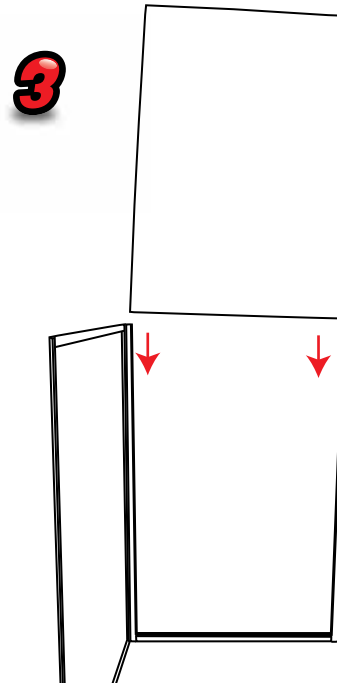
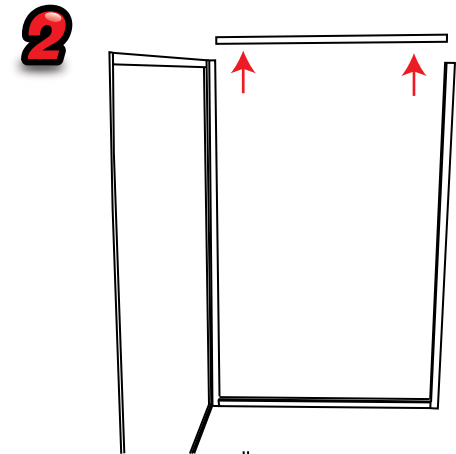
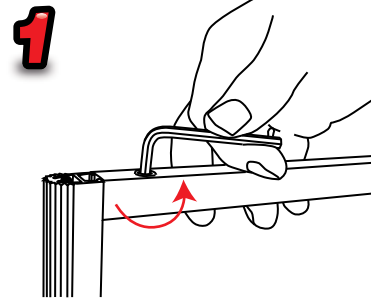


# Gear Edge 6 Panel



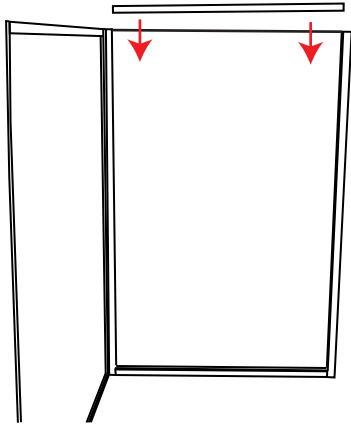
Infill panel size: 879 x 568mm  
Visible panel size: 867 x 556mm  
Header Panel  
Infill panel size: 229 x 568mm  
Visible panel size: 217 x 556mm  
Max thickness: 6mm



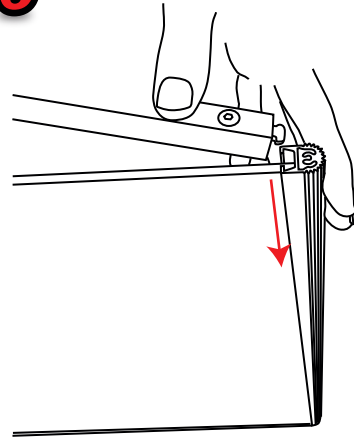
8.20kg with out infill  
15.70kg with infill

# Gear Edge 6 Panel

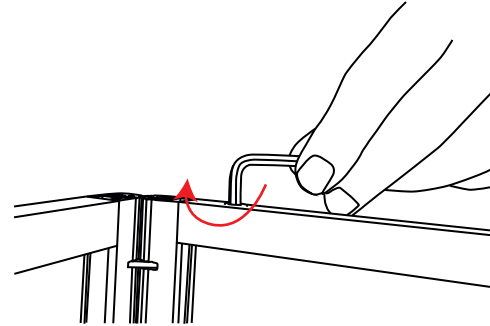
**5**



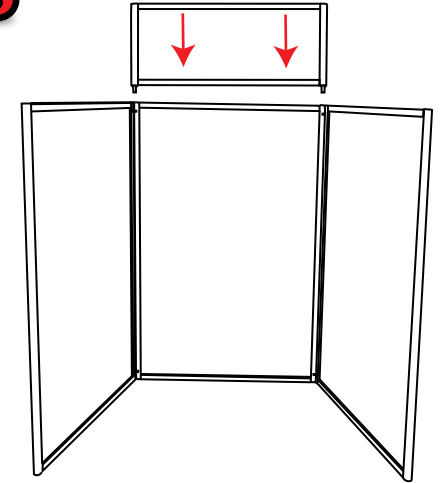
**6**



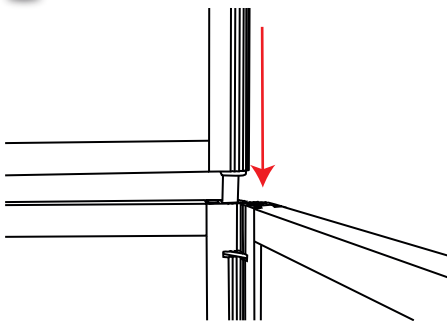
**7**



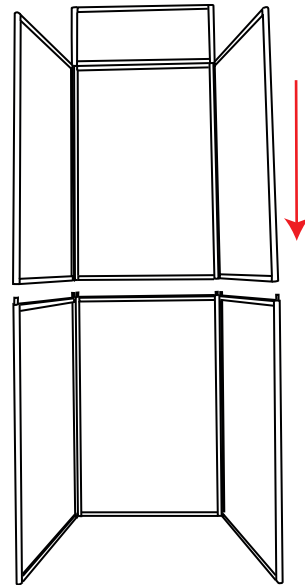
**8**



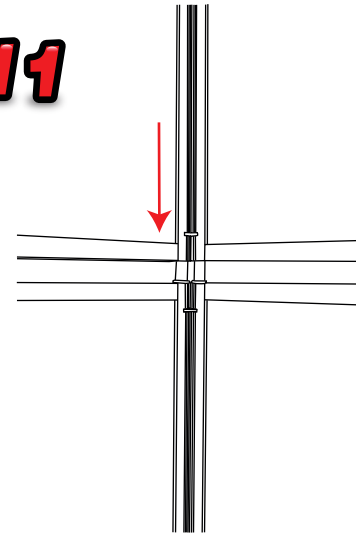
**9**



**10**



**11**



Included in your kit is a pack of 60 x 50mm soft hollow plastic packers which if required, can be inserted into the inner frame channel filling the void behind your graphic panel

Important- Please be careful not to place fingers near the gear edge mechanism

Gear Edge 6 Panel

**Installation**