

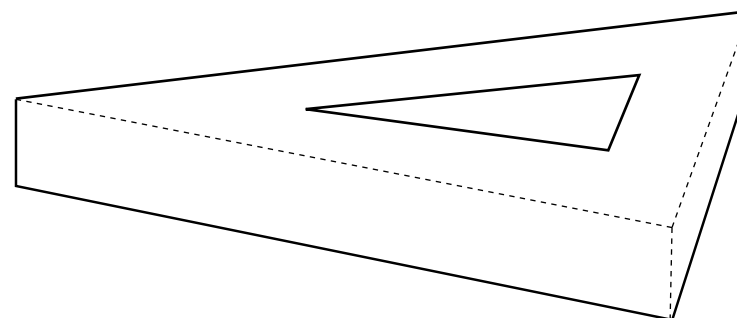
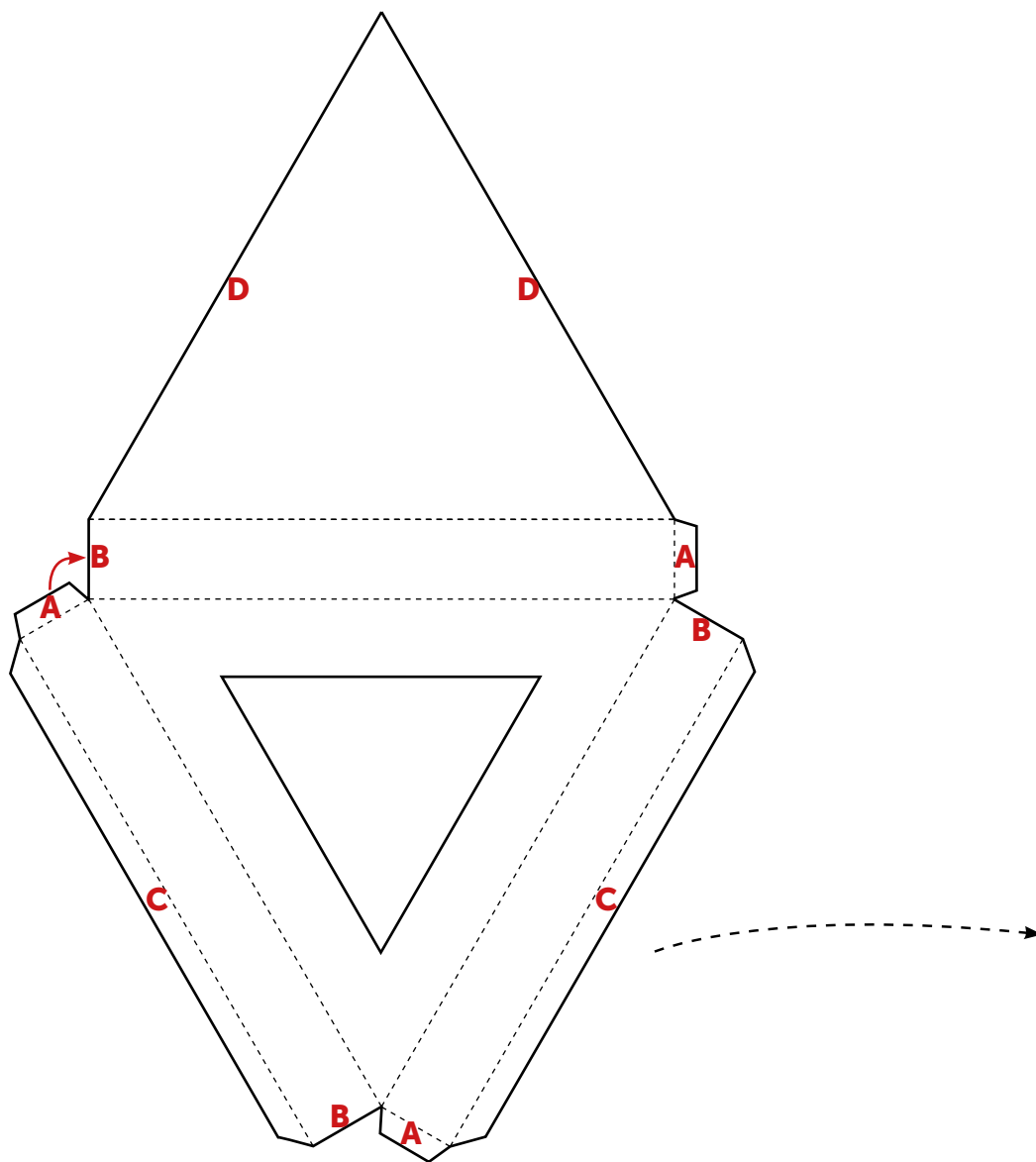
# CARDBOARD TOBLERONE

## Assembly Instructions

**IF YOU HAVE THE HEAVY WEIGHT BASE OPTION  
PLEASE SKIP TO PAGE 2.**

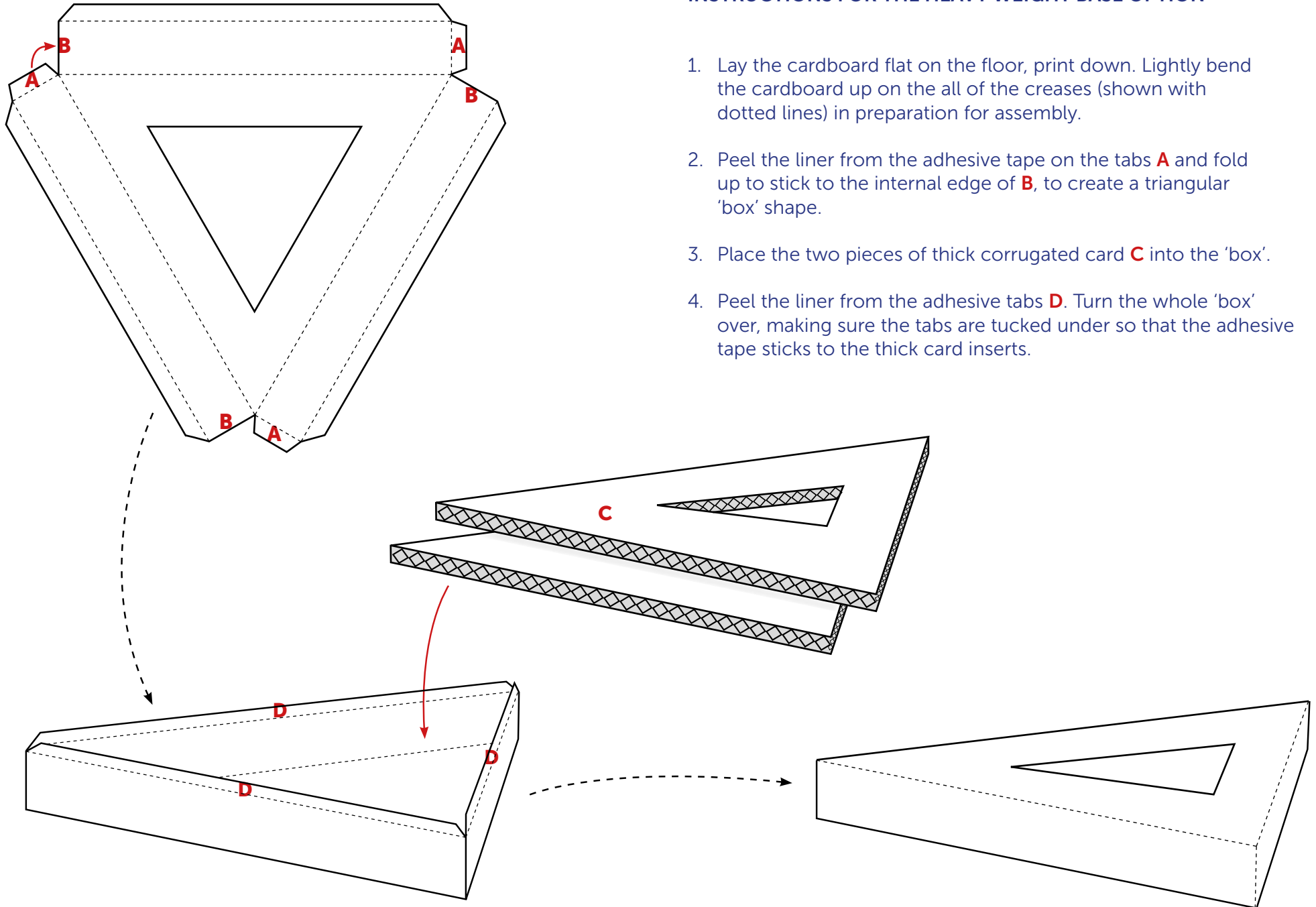
1. Lay the cardboard flat on the floor, print down. Lightly bend the cardboard up on all of the creases (shown with dotted lines) in preparation for assembly.
2. Peel the liner from the adhesive tape on the tabs **A** and fold up to stick to the internal edge of **B**.
3. Peel the liner from the adhesive tabs **C**. Fold the large triangular section over and attach tab **C** to the external side of edge **D**, to create a triangular 'box' shape.

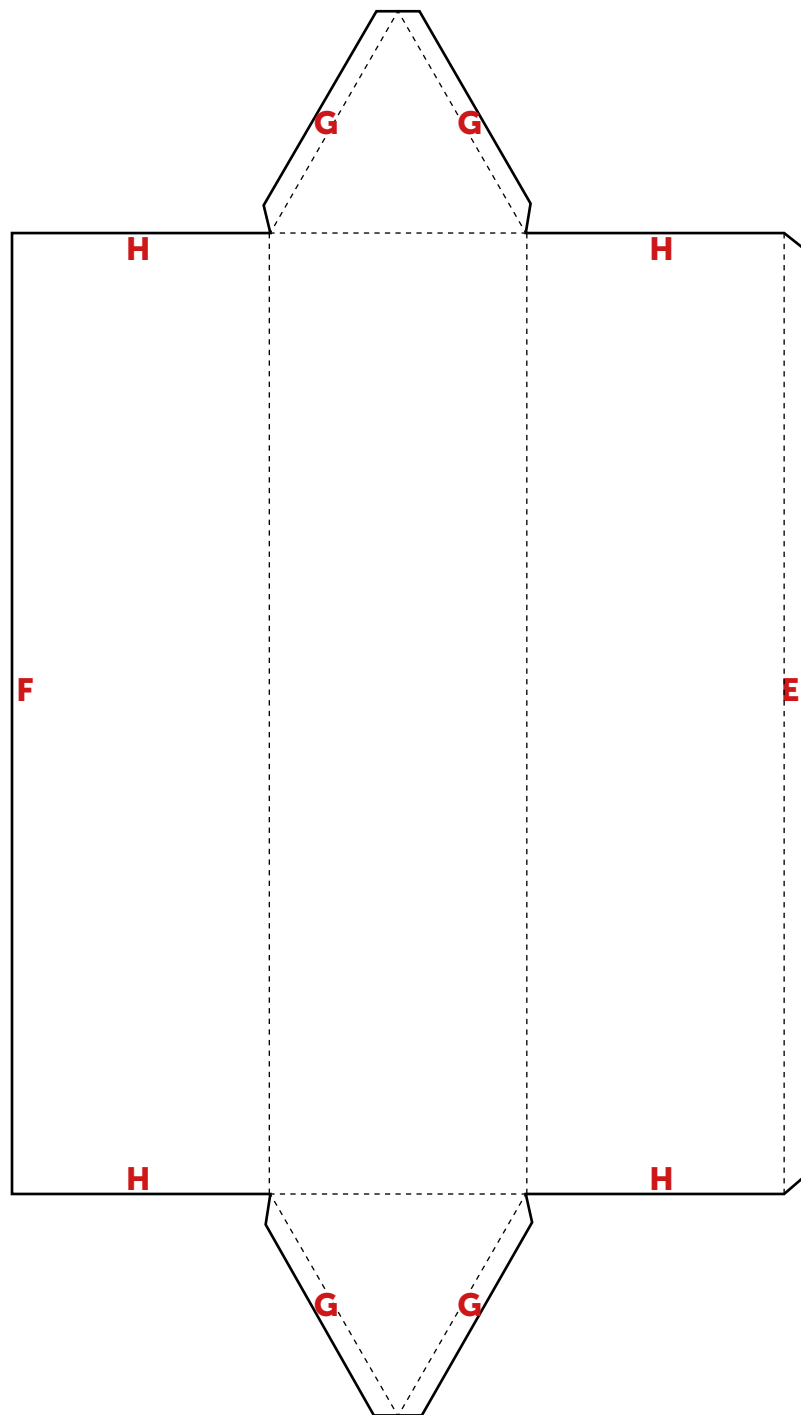
**GO TO PAGE 3, STEP 5.**



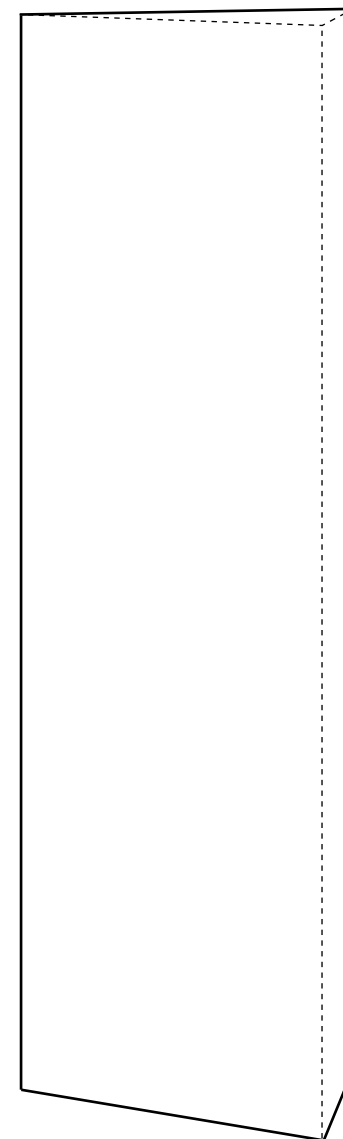
## INSTRUCTIONS FOR THE HEAVY WEIGHT BASE OPTION

1. Lay the cardboard flat on the floor, print down. Lightly bend the cardboard up on all of the creases (shown with dotted lines) in preparation for assembly.
2. Peel the liner from the adhesive tape on the tabs **A** and fold up to stick to the internal edge of **B**, to create a triangular 'box' shape.
3. Place the two pieces of thick corrugated card **C** into the 'box'.
4. Peel the liner from the adhesive tabs **D**. Turn the whole 'box' over, making sure the tabs are tucked under so that the adhesive tape sticks to the thick card inserts.





5. Lay the cardboard flat on the floor, print down.
6. Lightly bend the cardboard up on the all of the creases (shown with dotted lines) in preparation for assembly.
7. Peel the liner from the adhesive tape on tab **E** and stick to the inner edge of **F**.
8. Peel the liner from the adhesive tape on tabs **G**, and fold the lid down, tucking the tabs inside and sticking to the inner edge of **H**.
9. Repeat set 8 for the opposite end.



10. Place the main banner unit **I** down inside base unit **J** as far as it will go.

....Your Cardboard Toblerone is complete!

