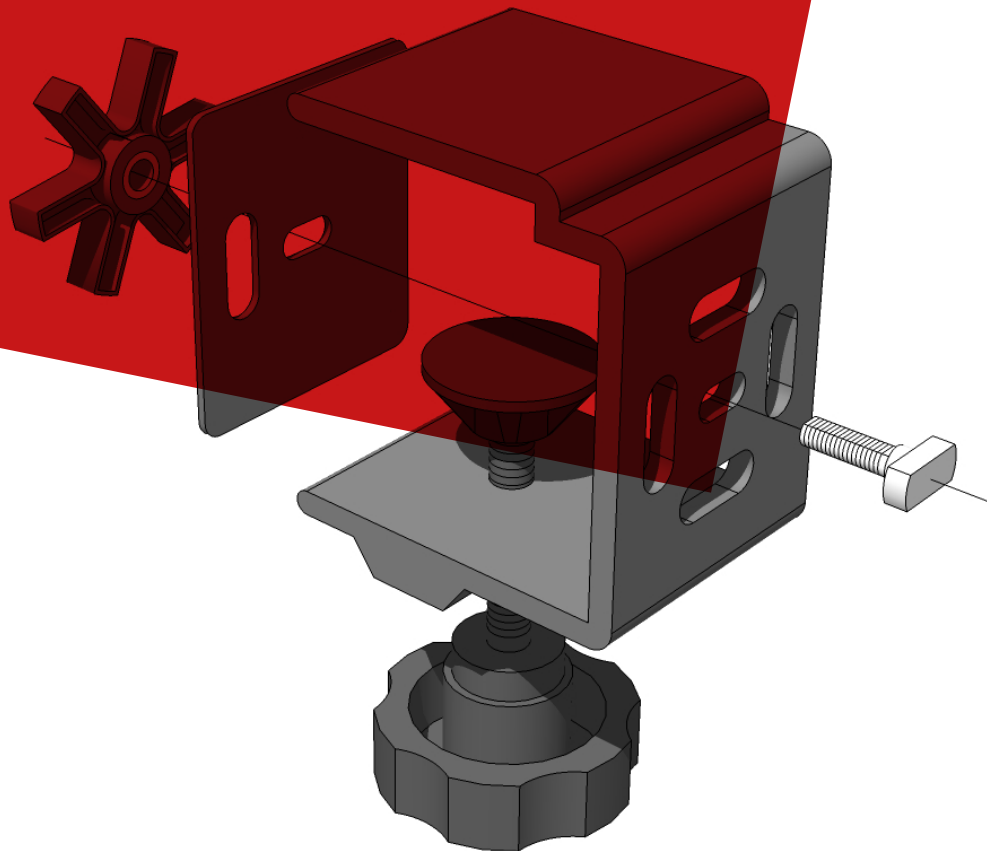


T3  
SYSTEMS

SHCLMP

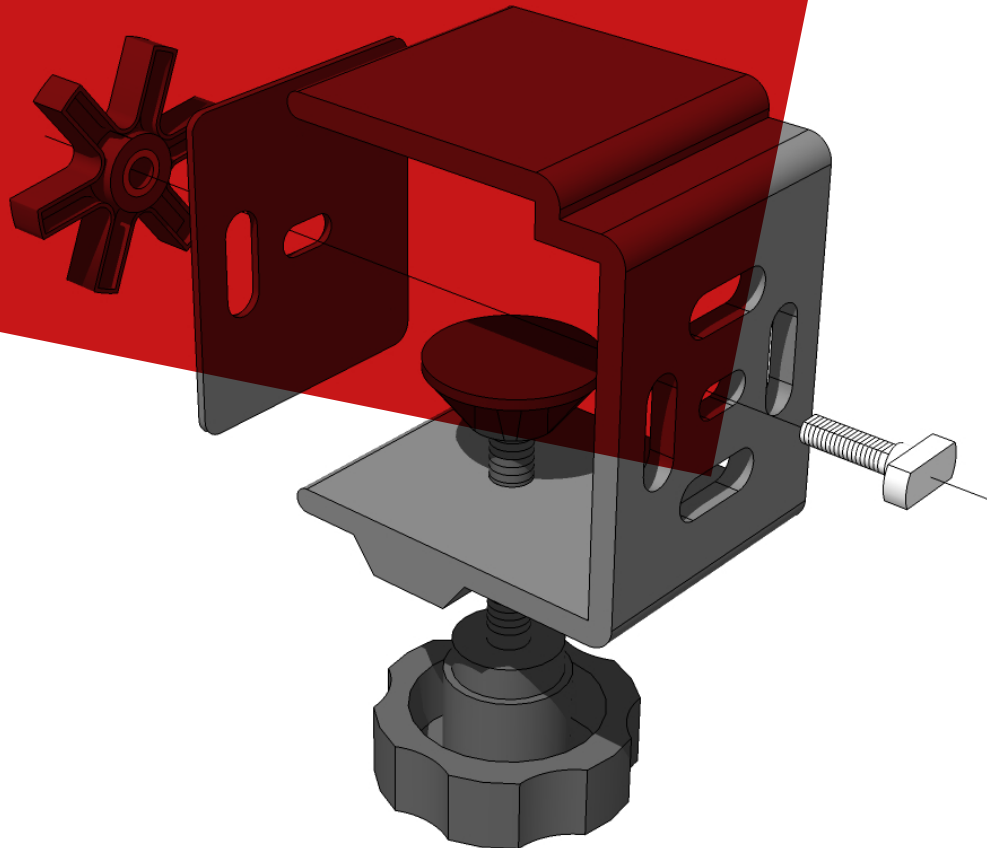


T3  
SYSTEMS

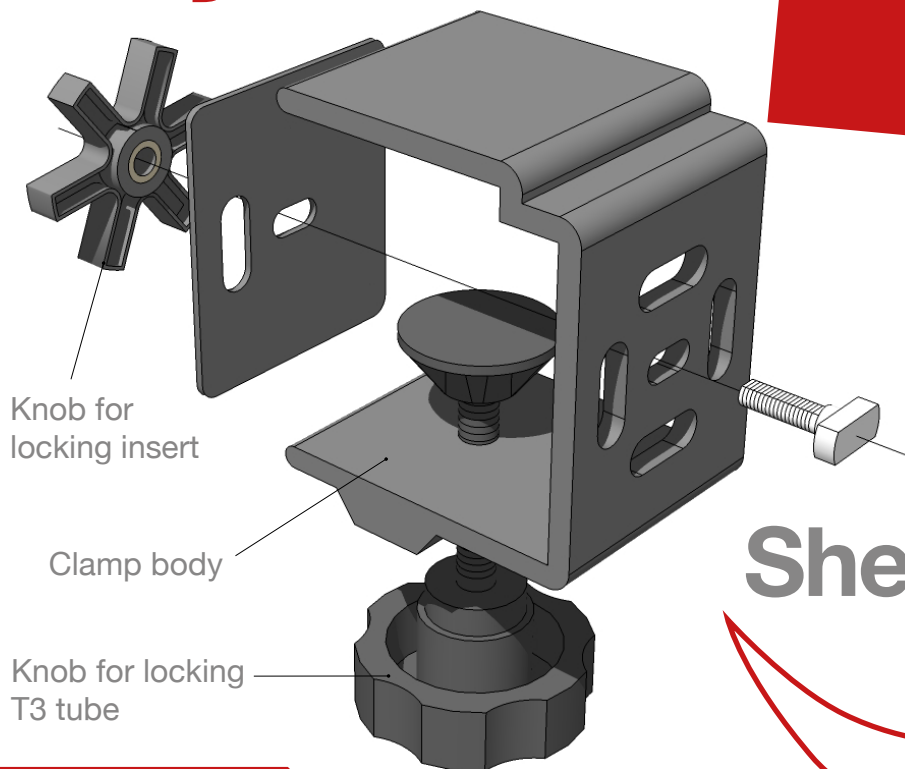
# SHCLMP

## Shell-Kit

### Convert Shell Scheme Into Seamless Displays



# Dynamic & Easy To Build



## Shell-Kit Clamp

### SHCLMP

#### Shell-Kit Clamp

T3 Shell-Kit has been designed with budget in mind. By using a specially designed clamp, shell scheme spaces can be converted and clad to create seamless yet professional display environments.

By utilising the T3 clamp, T3 can be fixed directly to any shell scheme throughout the world without the need for tools, saving you time and money.

The framework is then clad with a roll-able, rigid or fabric graphic. Incredibly compact, T3 Shell-kit sits just 60mm away from the shell scheme wall, maximizing your floor space.

Uniquely designed, T3 Shell-kit can be broken down into manageable lengths for ease of transport, with the average 3x3 shell scheme stand fitting in a bag over your shoulder.



#### **SMALL INSERT**

For Octanorm  
(Supplied fitted to clamp as standard)



#### **MEDIUM INSERT**

For Foga, Modul, Sodem, Syma & Unibox  
(Supplied separately with clamp)



#### **LARGE INSERT**

For Click  
(Supplied separately with clamp)

## Interchangeable Inserts

Locking inserts are interchangeable and allow the T3 Shell-Kit Clamp to fix to all the major aluminium profiles.

# T3 Shell-Kit Features At A Glance

Accommodates Lights

Integrated Screens

## SHCLMP

### Shell-Kit Clamp

- ❖ Fast, simple and easy to fit
- ❖ No tools required
- ❖ Can accommodate screens, plinths, storage etc
- ❖ Low cost solution
- ❖ Compact and lightweight
- ❖ Carries rigid, roll-able or tension fabric panels
- ❖ Fits any shell scheme profile
- ❖ Independent seamless graphics
- ❖ Intergrates with all T3 systems
- ❖ Can be reconfigured into larger freestanding structures.
- ❖ Shell-Kit panels can be re-used on wider shell scheme walls.
- ❖ Saves much needed floor space compared to a 'pop up'

Seamless Graphics

Guaranteed Fit

## Shell-Kit Standard Height 2380.5mm



**1** Build the T3 framework



**2** Attach the graphics



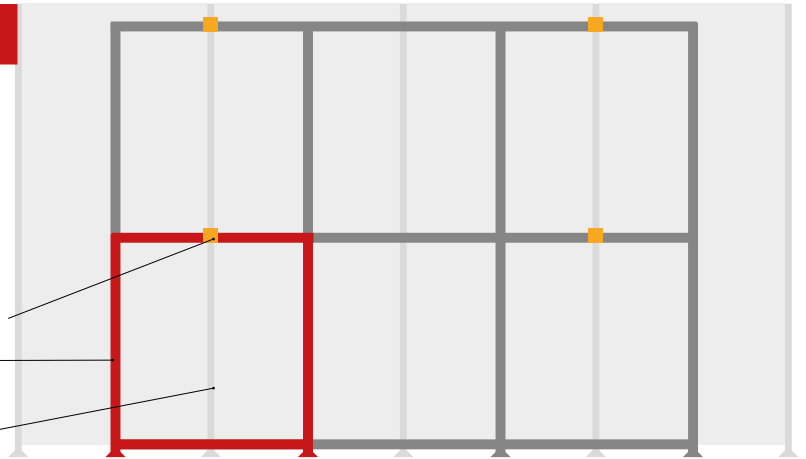
**3** The finished wall

### Building A T3 Shell-Kit Wall

Start building the T3 structure constructing the first square at either bottom corner. Using the T3 clamp, locate the T3 to the shell scheme.

Construct the remaining frame securing the frame to the shell scheme using the remaining clamps.

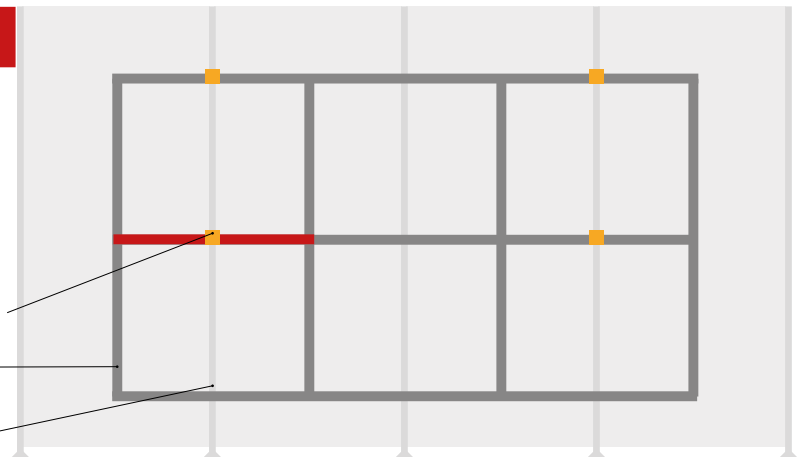
T3 Clamp  
T3 Framework  
Shell Scheme Wall



### Building A Floating T3 Display Panel

Start building the T3 structure by fitting one of the middle horizontal beams. It is important that this is level before tightening the clamp.

T3 Clamp  
T3 Framework  
Shell Scheme Wall





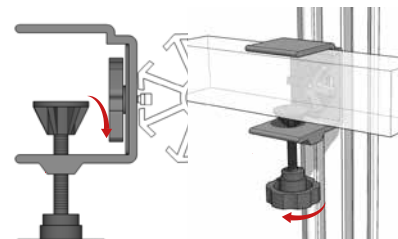
# Fits Any Shell Scheme Profile

## Fitting The Clamp To Shell Scheme



1 Starting with the clamp at 90° to its finished position, place the locking insert into the channel of the shell scheme upright.

2 Turn the clamp 90° The locking insert will now hold the clamp to the upright.



3 Tighten the knob for the locking insert to secure the clamp in position on the upright.

4 The T3 beam can now be positioned in the clamp, held by tightening the second knob.

\*T3 framework can be easily repositioned or adjusted by releasing the clamps.





# Convert

“We’ve been using the T3 system for three years now and calculated it saves us 20-30% of our exhibition costs.”

Nik Hughes  
BAE SYSTEMS



10mm Foamex



700mic Roll-able



PVC Roll-able

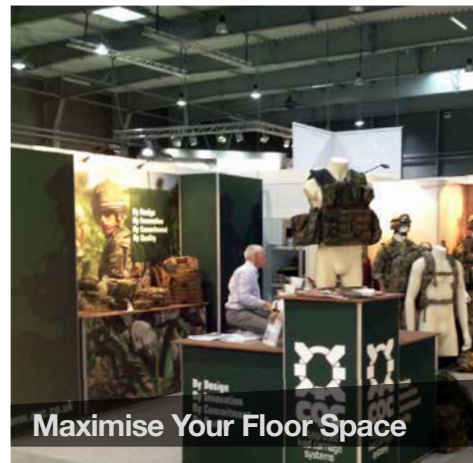


# Dynamic & Easy To Use



Screens & Monitors

Shell-Kit Examples



Maximise Your Floor Space



Tension Fabric



Storerooms



Floating Panels



Wall Mounted Products

# Cost Effective

# RRP Pricelist Guide

## All Prices Exclude VAT

T3 Shell-Kit is typically installed in panels, ie; A two sided shell scheme stand would be clad with two separate Shell-Kit panels which can be joined in the corner if required.

Shell Scheme systems throughout the world vary in shape and size. By fitting a panel to each wall you will ensure a consistent fit everytime.

Should you require a custom size or would like to integrate screens, counters, towers or curved corners then please don't hesitate to contact our technical team.



## For Our Full Range Of T3 Systems

- Visit the website: [www.tecnauk.com](http://www.tecnauk.com)

- Exhibition stands, Conference sets, Bars & counters, Light-boxes and Retail solutions. The possibilities are endless...

# Seamless Graphics



ALU  
947

### FF Shell-Kit

#### Channel Beam (Fabric)

CODE	SIZE (M)	PRICE RRP (EX VAT)	WEIGHT (KG)	NO. ARM-LIGHTS	PRICE RRP (EX VAT)	GRAPHIC (SQM)
CBF 001	1M Wall	£263.32	6.8	1	£82.31	2.4
CBF 002	2M Wall	£431.43	10.8	2	£164.62	4.8
CBF 003	3M Wall	£599.54	14.9	3	£246.93	7.1
CBF 004	4M Wall	£767.65	18.9	4	£329.24	9.5
CBF 005	5M Wall	£935.76	22.9	5	£411.55	11.8
CBF 006	6M Wall	£1,103.87	27.1	6	£493.86	14.2
CBF 007	7M Wall	£1,271.98	31.1	7	£576.17	16.6

ULT  
947

### FF Shell-Kit

#### Ultralite Channel Beam (Fabric)

CODE	SIZE (M)	PRICE RRP (EX VAT)	WEIGHT (KG)	NO. ARM-LIGHTS	PRICE RRP (EX VAT)	GRAPHIC (SQM)
UCB 001	1M Wall	£226.00	4.9	1	£82.31	2.4
UCB 002	2M Wall	£366.64	7.8	2	£164.62	4.8
UCB 003	3M Wall	£507.28	10.5	3	£246.93	7.1
UCB 004	4M Wall	£647.92	13.2	4	£329.24	9.5
UCB 005	5M Wall	£788.56	16.1	5	£411.55	11.8
UCB 006	6M Wall	£929.20	18.7	6	£493.86	14.2
UCB 007	7M Wall	£1,069.84	21.4	7	£576.17	16.6

ALU  
1437

### FF Shell-Kit

#### Channel Beam (Fabric)

CODE	SIZE (M)	PRICE RRP (EX VAT)	WEIGHT (KG)	NO. ARM-LIGHTS	PRICE RRP (EX VAT)	GRAPHIC (SQM)
CBF 011	1M Wall	£263.32	5.3	1	£82.31	2.4
CBF 012	2M Wall	£431.43	10.8	2	£164.62	4.8
CBF 013	3M Wall	£599.54	14.9	3	£246.93	7.1
CBF 014	4M Wall	£662.54	17.3	4	£329.24	9.5
CBF 015	5M Wall	£830.65	21.4	5	£411.55	11.8
CBF 016	6M Wall	£998.76	25.4	6	£493.86	14.2
CBF 017	7M Wall	£1,061.76	27.9	7	£576.17	16.6

## SPL

### Tungsten Spotlight c/w T3 Clamp

Weight	708g (inc. lead & clamp)
Power	36W (Equivalent to 150w Halogen)
CE Certified	



## HTFT

### Height & Tilt Adjustable Feet

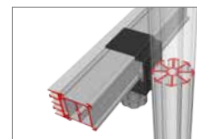
CODE	DIAMETER	WEIGHT
FA25	25mm	26g
FA38	38mm	33g



## SHCLMP

### Shell-kit Clamp - For fixing T3 to shell schemes & permanent fixtures

Weight	60g
Material	Aluminium



## CON

### Connector - 33mm square

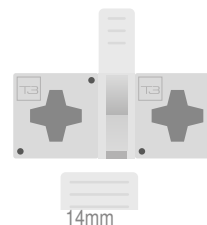
Weight	22g
Material	Polycarbonate
Fire Rating	ULV-O



## DB14

### Double Joiner 14mm

Width	14mm
Weight	10g
Material	Polycarbonate
Fire Rating	ULV-O



# ALU 947

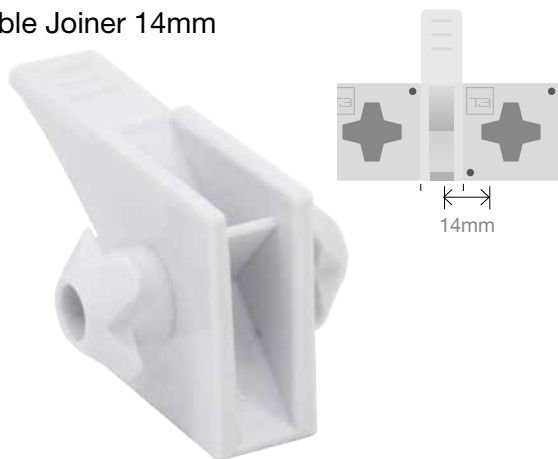
## AF Shell-Kit

### Fusion Beam (Roll-able)

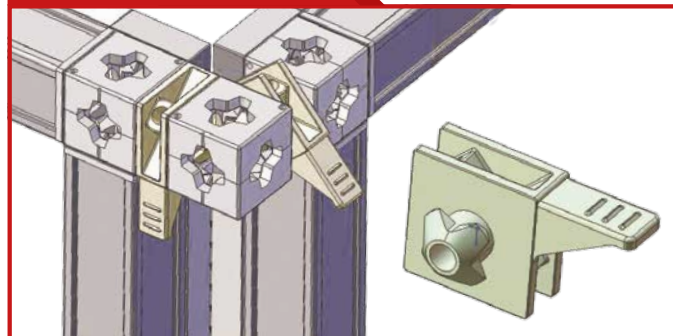
CODE	SIZE (M)	PRICE RRP (EX VAT)	WEIGHT (KG)	NO. ARM-LIGHTS	PRICE RRP (EX VAT)	GRAPHIC (SQM)
FBR 001	1M Wall	£287.88	4.8	1	£82.31	2.4
FBR 002	2M Wall	£497.87	8.3	2	£164.62	4.8
FBR 003	3M Wall	£707.86	11.7	3	£246.93	7.1
FBR 004	4M Wall	£917.85	15.2	4	£329.24	9.5
FBR 005	5M Wall	£1,127.84	18.6	5	£411.55	11.8
FBR 006	6M Wall	£1,337.83	22.1	6	£493.86	14.2
FBR 007	7M Wall	£1,547.82	25.6	7	£576.17	16.6

## DJ14

### Double Joiner 14mm



## Fabric Corner



### Corner Pack (x6 Double Joiners / x3 Connectors)

CODE	PRODUCT	PRICE RRP (EX VAT)	WEIGHT (KG)
CRN 001	Corner Pack	£26.01	0.1

## CB

### Carry Bags

CODE	INTERNAL DIMENSIONS	WEIGHT	CAPACITY
M	1050(w) x 210(d) x 210(h)mm	1.6kg	X36 980cc tubes
L	1300(w) x 210(d) x 170(h)mm	2kg	X30 1250cc tubes
XL	1550(w) x 170(d) x 170(h)mm	2.6kg	X25 1450cc tubes



# TECNA<sup>UK</sup>

Distributed by:

Printdesigns Limited  
Emerald Way, Stone Enterprise Centre,  
Stone, Staffordshire, ST15 0SR

**[sales@printdesigns.com](mailto:sales@printdesigns.com)**

**01785 818111**

**[www.printdesigns.com](http://www.printdesigns.com)**

Tecna UK T3 Systems are protected by  
the following Design Patents, Patent  
Applications and Design Registrations

UK 06 12 683.3  
International PCT/2007/002306  
UK 06 09 032.8  
EEC 524 970  
International PCT/GB2007/001633 EEC  
862.644  
EEC 984.265-1/2/3  
PCT/EEC1003396.2

UK 06 23 361.3  
EEC 626.825  
USA 29/285.162  
China 2007 30 006 801.X  
Canada 119.708  
India 208 826  
International PCT GB2007/004377 551  
536