

# Action Promotional Counter Unit

1005mm

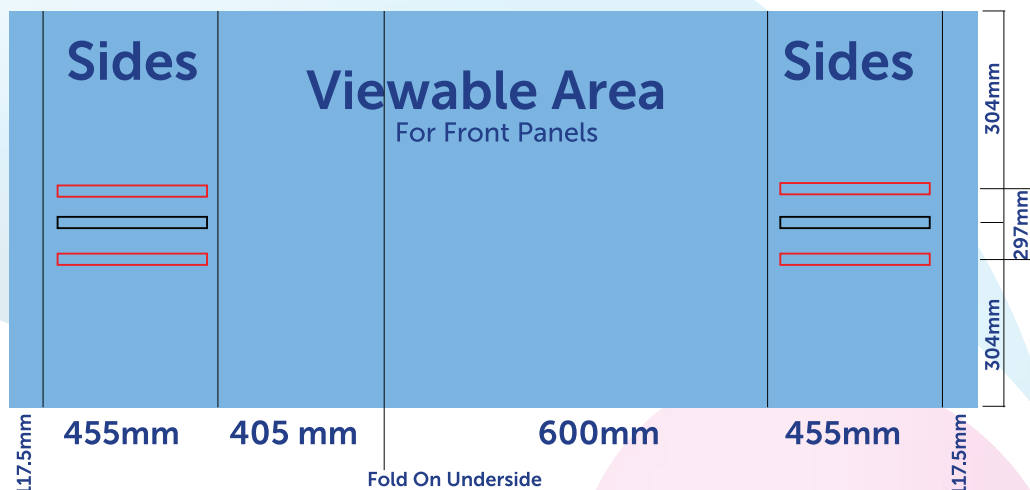
**Viewable Area**  
For Header Panel

## Artwork setup guide

345mm

2150mm

905mm



- Two pieces of artwork will need to be supplied:  
Header Panel - 345mm x 1005mm Wide  
Main body panel - 905mm x 2150mm Wide

- You should allow 37.5mm top and bottom of the file. Also, please note the position of the cut outs for the shelves when designing the artwork.
- Accepted file formats are: PDF, Jpg or Tiff.
- Use CMYK colour mode

- Resolution to be 150dpi at full size, 300dpi at half size or 600dpi at quarter size.
- Include 5mm of bleed around each edge and save your file with crop marks
- On the guide above, the red rectangles show the cut out area for the two shelf version the black box Show one shelf version.

Hardware Specifications	Graphic Specifications	Additional Information
<p>Hardware dimensions approx (mm)</p> <p>2210mm (h)</p> <p>1005mm (w)</p> <p>455mm (d)</p> <p>Weight:</p> <p>14.15 Kg</p>	<p>Visible graphic dimensions approx (mm)</p> <p>From Front - 1005mm 867.5mm</p> <p>Choice of Substrates:</p> <p>Self Adhesive Vinyl over-laminated with 125 micron crystal textured film</p>	<p>Included in kit</p> <p>Base and Header Panels</p> <p>Poles</p> <p>Carry bag</p> <p>Laminated Printed Graphics</p>