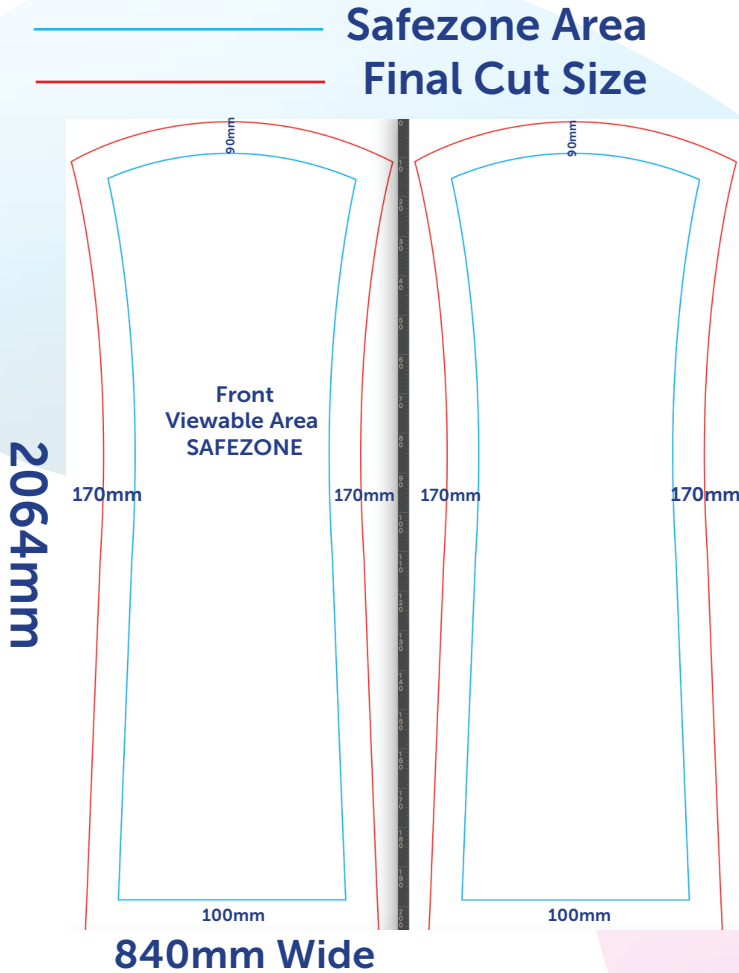


TexStyle Icon Fabric Banner Stand Curved Top Version

Artwork setup guide



- Please be aware that the graphic used is under tension when assembled on the frame unit. Therefore, please do not put any critical information outside of the Safezone.
- Any information that is outside of the 'Safezone' may be liable to distortion. All interior measurements are to edge of the safe area.
- Use CMYK colour mode
- Accepted file formats are: PDF, Jpg or Tiff
- Resolution to be 150dpi at full size, 300dpi at half size or 600dpi at quarter size.
- Include 5mm of bleed around each edge and save your file with crop marks

Hardware Specifications	Graphic Specifications	Additional Information
<p>Hardware dimensions approx (mm)</p> <p>2000mm (h)</p> <p>850mm (w)</p> <p>450mm (d)</p> <p>Weight:</p> <p>7Kg including graphic</p>	<p>Visible graphic dimensions approx (mm)</p> <p>From Front - 650mm x 2000mm</p> <p>Choice of Substrates:</p> <p>Dye-Sublimation Printed Stretch Fabric</p> <p>Graphic</p>	<p>Included in kit</p> <p>Printed Fabric Graphic complete with Aluminium stand and carry bag.</p>